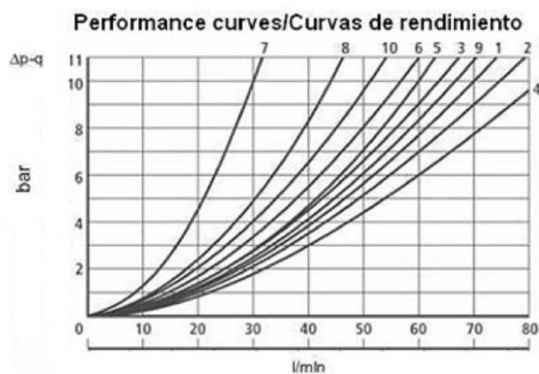
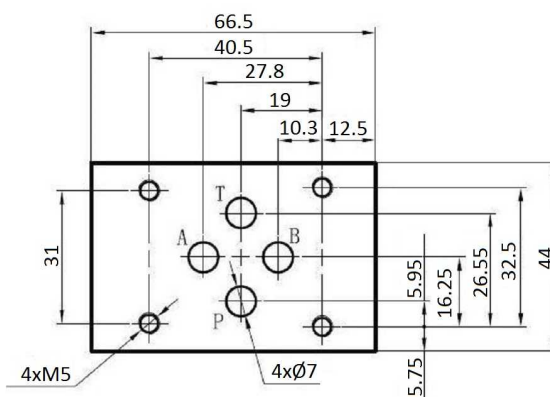
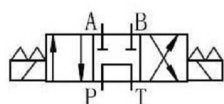


Solenoid valves

NG6 Solenoid valve

NG6 Solenoid valve - spool no.2

Page: 1/2



Spool / Corredera	Flow path / Trayectoria flujo			
	P-A	P-B	A-T	B-T
1	3	3	1	1
2	6	6	9	9
3	2	4	2	2
6	1	1	2	1
3A	-	4	2	-
41A	3	3	-	-
51A	1	1	3	1

Electric Connectors with LED

4 Screw Set Included M5x45

Operating Pressure · A, B, P: 315 bar
· T: 160 bar

Cast iron body IP 65

Part n°	Size	Voltage (V)	Max. flow (l/min)	Max. Press. (bar)	f (Hz)
KVNG6-2-12CC H	NG-6	12 VDC	60	315	
KVNG6-2-24CC H	NG-6	24 VDC	60	315	
KVNG6-2-110CA H	NG-6	110 VAC	60	315	50
KVNG6-2-220CA H	NG-6	220 VAC	60	315	50

Solenoid valves

NG6 Solenoid valve

NG6 Solenoid valve - spool no.2

Page: 2/2

Part n°	Size	Voltage (V)	Max. flow (l/min)	Max. Press. (bar)	f (Hz)
---------	------	-------------	-------------------	-------------------	--------

*** Review attached PDF***