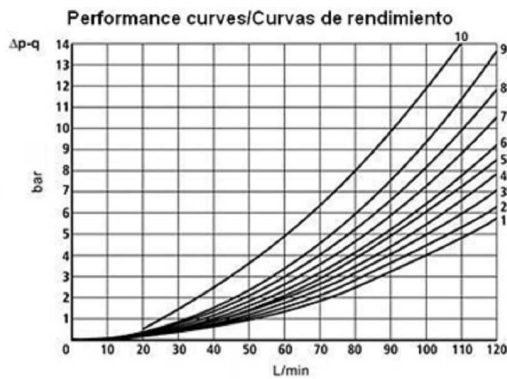
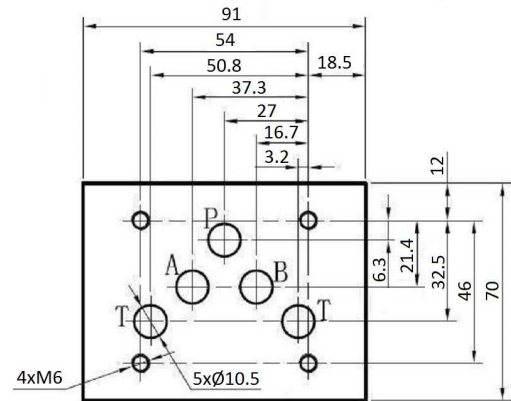
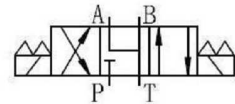


Solenoid valves

NG10 Solenoid valve

## NG10 Solenoid valve - spool no.6



Spool / Corredera	Flow path / Trayectoria flujo			
	P-A	P-B	A-T	B-T
1	1	1	4	4
2	3	3	6	7
3	1	1	6	7
6	1	1	3	3
3A	-	1	6	-
41A	3	3	-	-
51A	3	3	4	5

**Electric Connectors** with LED

**4 Screw Set Included** M6 x 40

**Operating Pressure** · A, B, P: 315 bar  
· T: 160 bar

**Cast iron body**

Part nº	Size	Voltage (V)	Max. flow (l/min)	Max. Press. (bar)	f (Hz)	Ø nucleus
KVNG10-6-12CC H	NG-10	12 VDC	120	315		31
KVNG10-6-24CC H	NG-10	24 VDC	120	315		31
KVNG10-6-110CA H	NG-10	110 VAC	120	315	50	31
KVNG10-6-220CA H	NG-10	220 VAC	120	315	50	31

Solenoid valves

NG10 Solenoid valve

## NG10 Solenoid valve - spool no.6

Page: 2/2

Part n°	Size	Voltage (V)	Max. flow (l/min)	Max. Press. (bar)	f (Hz)	Ø nucleus
---------	------	-------------	-------------------	-------------------	--------	-----------

\*\*\* Review attached PDF\*\*\*